



Our News Our Views

Created by People with a Learning Disability for the
Learning Disability Community.

Edition 41 – June 2018

Special points of interest:

- Do you love football? World cup begins!
- Action to help people with a Learning disability live longer.
- Life after Ryefields — the new Horizon Centre in Ross.

Inside issue

Report on Life Length.	2
St Owen's Centre.	2
What's On.	3
Horizon Centre.	4
Wonder Woman.	5
Women in War.	6
Jokes.	6

Russia and the World Cup—

By Adrian Phipps

The FIFA World Cup is an international association football competition, started in 1930, which takes place every 4 years, except in 1942 and 1942, having been cancelled due to World War II.

The World Cup Final match is the last of the competition, and will determine which country is declared world champions.

There will be 32 teams taking part in the World Cup, and the final will be held at Luzhniki Stadium on the 15th July. This will be the first time the World Cup has ever taken place in Russia, and there will be 3,000,000 people visiting there to watch, and the first World Cup match will be Russia V Saudi Arabia.

Some people are not happy with the World Cup taking place in Russia due to recent events, such as a) Releasing a nerve agent in Britain and b) Russia's actions in the Syrian war.



FIFA WORLD CUP
RUSSIA 2018



Learning Disability Strategy

— By Tracy Roberts



Herefordshire Council have produce a learning disability strategy, which will last ten years, it is based on research from 2014/2015 and lots of good policies like valuing people.

Lots of people have made comments to improve the strategy including the Learning Disability Partnership Board, Scrutiny committee, meetings at Aspire, Horizon and hopefully Leominster. An easy read version of the strategy will be made soon. It is hoped to be a plan that changes and develops as the years go by and good outcomes are achieved.

Update from the editors



By Tracy Roberts on behalf of Our News Our Views

4 years ago we published our first Our News Our Views newsletter and we want to say **thank you** to all of our readers for your support.

Congratulations to Simon Harris who won the word search in May.



If you have your newsletter by email please let us know that you would still like us to contact you or we will have to remove you from our mailing list.

Please reply to our email about GDPR as soon as possible! Thank you.

See you in July — deadline for your articles 20th June.

Failings in learning disability deaths, report finds

— By BBC News

A review into the deaths of people with learning disabilities by NHS England has raised concerns about their care.

The Learning Disability Review found failings had taken place in one in eight deaths, from abuse to delays in treatment.



The report says that lives are being cut short and more needs to be done so that people with a Learning Disability live as long as other people who have the same health conditions.

We were pleased to meet the team writing the Learning Disability Strategy and to see actions in it to improve the way that people access health services. We hope the situation can be improved quickly because it is worrying and unfair.

Changes to daytime services in Hereford

— By Tracy Roberts

Herefordshire Council has promised to build on the current services available for adults with learning disabilities in Hereford.

The council is putting in nearly £2 million over the next five years to make learning disability services better. These happen at the St Owens Centre in Hereford. The services now running end in November. They have been run by Aspire since April 2017.

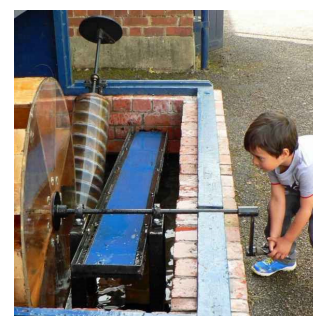
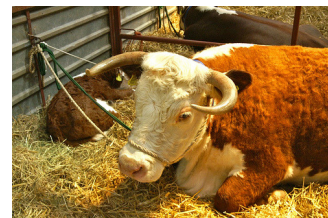
The Council will ask organisations to say if they want to run these learning disability day services over the next five years. They will then choose who they think will do it best.

Herefordshire Council say they want the services to improve to make sure they meet the needs of adults with learning disabilities.

I think it's good that the services are safe for five years as long as there is enough money in the contract to make these services better.



WHAT'S ON JUNE 2018



Date	Time	What	Where	Detail/
2nd	10-4	Radway Rose Day with Jane Masters	Join the staff at Radway Bridge garden centre, HR13RX	Free
2nd	9.30 To 3.30	Kington Summer Food and Drink Festival	Kington, HR5 3BQ	Free
Tues and Thurs	9 a.m.	Yoga with Ian Lloyd April to September.	The Nest—in the Henry Yurt, Ledbury, HR82PZ	01531 670 816 To Book
3rd	2-5	Working Horse	Burlingjobb, Kington, HR82PW	Donation St. Michael's Hospice.
Every Monday	1.30-2.30	Fit Kit	Richmond Club, Hereford	£3 (25% less for groups of 4 or more.
Every Wednesday	1.30-2.30	Fit 2B Fit	Richmond Club, Hereford	£3
9th +10th	10– 5	Hellens Garden Festival	Hellens, Much Marcle, Ledbury. Herefordshire. HR8 2LY	Adult £7 Family £16
10th	12-4	Waterworks Museum Family Fun Day	Broomy Hill, Hereford HR4 0LJ	£6
16th	11-4	Houghton Project Open Day	Bodenham, HR13HZ	FREE
20th	7-9.30	Summer disco and BBQ	Aspire community hub, Canal Road. HR12EA	£8 book ahead 01432 266881.
23rd + 24th	9	Autograss	Lyonsshall	
30th	10-5	Shobdon Food and Flying Festival	Shobdon, HR6 9NR	See website.



HorizonCentre – By Peter Ross on Wye

Two years ago, we went to Ross-on-Wye to see what services they had for people with learning disabilities.

We visited Ryefields Centre and talked about the centre and what they do there. Sadly, Ryefields closed down in October 2017 so there was nowhere for the users to go. Three of the staff from Ryefields decided to open a new centre in Ross. We went to see the new centre to find out how they were doing. The new building is bigger and brighter than old one. I really liked it.

We met with Maria, Lou and Clarissa who run the centre and some participants and volunteers. Maria showed us round.



We saw the IT room, chill out room with a pool table football, dart board and tables and sofas. Also, there was a wood-work room where they make bird boxes and kindling.

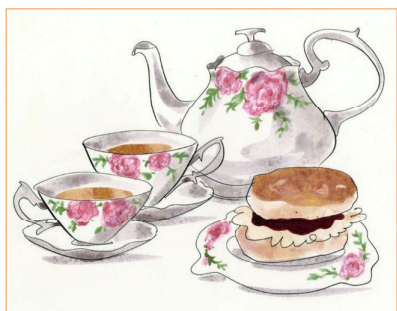
There is a craft room where they make greeting cards to sell at the local market. Just down the road they do gardening at the Model Farm and they have raised beds and a polytunnel for growing veg.

I talked to Maria about why they set-up Horizon Centre. "When Ryefields closed", said Maria, "the community was upset that it lost another local service. So, there has been lots of good will and support for Horizon Centre". Maria went on to say that they hope to become a 'community asset', a real part of community. For example, by opening a pop-up shop, having coffee mornings every other week open to everyone. They also plan to put on a half day course open to everyone in town so that service users are mixing with community. I think it was brilliant how community pulled together to support the centre. Many items like the pool table were donated and a local developer found them the building they are in.

If anyone would like to know more about the centre or to arrange a free taster day, ring Maria and the team on 01989 253131.



Late Spring Coffee Morning Orchard Trust Day Services, Stowfield



Wednesday 6th June

11.30am - 1.30pm

More than just coffee and cake...visit our new activity park and meet our friendly animals.

FOR FURTHER INFORMATION CONTACT PHILL HUCKS ON 01594 861359

Wonder Woman – By Tracy Roberts



Wonder Woman

"I was surprised to find out some key messages about fairness. I like that about her".

Wonder Woman is a superhero who was sent by the Gods of Olympia

The Gods are from Greek stories called myths and legends.

The story of wonder woman began in 1941 and has run through six different time periods.

Wonder Woman stands for the values of forgiveness, peace and caring for each other. She acts to tell us the importance of treating people equally and the danger of treating people badly.

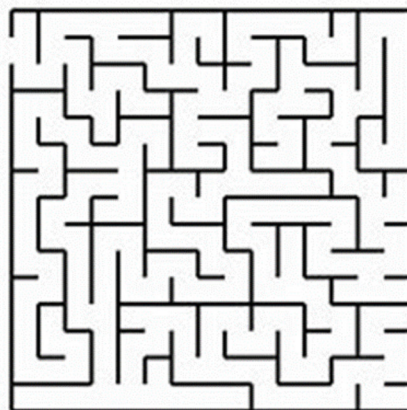
Her powers include:-

- ♦ Great speed and strength
- ♦ Fantastic senses of touch, hearing and taste.
- ♦ She got wisdom
- ♦ Great understanding of people
- ♦ Inner beauty that gives her a great love and caring for all life makes her very brave and drives her to risk her life for others.

She had lots of different costumes through the ages to match the fashion of the time. My favourite costume is the earliest and I am going to wear it at NODA summer school for superheroes night.

I was surprised to find out some key messages about fairness. I like that about her.

Can you help the ball find it's way to the goal?!



Women in War—By Lisa Perkins



Women have always worked...

First world War Women – a Series by Lisa Perkins.

Women have always worked. In the 1900's 32 per cent of British women were in paid employment.

This series of articles looks at 16 women who worked in public service during the period of the first world war.

Dame Nellie Robinson (1880-1972)

During the First World War, Dame Georgina Ellen Robinson, (known as Nellie), was the only black woman on the Mobilization Committee in Antigua, which encouraged local men to join the war effort.

104 troops and 6 officers travelled to Britain and Canada to enlist from Antigua and Barbuda. She also successfully campaigned for better living conditions for the recruits taking the long sea voyage.

Elzira Dantas Machado

In 1916 Elzira Dantas Machado founded the Portuguese Women's Crusade. The Organisation supported Portuguese Soldiers in France and in the African Colonies and their families.

One strand of their work was supporting prisoners of war held in Germany. The Members collected clothes, tobacco, newspapers and books as well as helping the families financially.

From 1917 to 1918 around 7,000 Portuguese soldiers were taken prisoner by the German Army.

In 1917 the Government was overthrown by a military coup. Elzira fled with her husband (the president), and 19 children to France.



Have you heard the one about...?

A guest calls the waiter, "why are there no chairs at our table?" The waiter shrugs, "I am sorry, but you only booked one table."

What's the difference between the invisible man and England? You've got more chance seeing the invisible man at the world cup final.

What do you get when you cross-breed a shark and a cow?

I have no idea, but I wouldn't try milking it.



L	D	H	M	A	N	G	L	P	H	E	A	D	E	R
J	I	M	G	H	G	H	I	I	D	N	W	C	E	F
G	Z	G	V	W	O	R	H	T	G	V	Z	F	A	N
O	K	L	N	X	T	M	D	C	C	F	E	B	M	P
A	C	D	H	S	Z	L	O	H	B	R	N	B	B	O
L	N	F	M	X	G	R	D	X	E	X	D	W	R	S
G	V	S	Y	U	N	N	P	E	N	A	L	T	Y	T
B	G	V	I	E	I	O	F	F	S	I	D	E	E	F
A	O	K	R	D	C	D	L	O	G	Y	T	B	L	Z
L	A	M	H	W	X	X	A	V	Y	Z	X	Z	L	H
L	L	V	I	D	E	O	D	T	C	A	R	D	O	U
J	L	U	O	F	D	W	H	I	S	T	L	E	W	D
T	I	T	Y	U	G	H	B	N	X	C	Y	P	C	S
H	N	X	L	I	N	E	S	S	O	R	C	D	E	R
J	E	G	H	F	L	A	G	S	T	O	O	B	F	R

Puzzle Corner

**Goal, Post,
Lines Man,
Referee,
Video Replay,
Ball, Whistle,
Foul, Throw,
Pitch,
Stadium, Fan,
Yellow Card,
Penalty, Goal
line, Corner
Offside, Strip,
Boots.**

Send in
with your
name,
address,
and email
or phone
number.

Deadline
June 20th .
One entry
per person
please!

Prize
donated by
Ms Brettina
Meadows.
Thank You!

Snakes and Lizards

- By Laura Joliffe

Snakes and lizards are the reptiles found on land in the UK, which is at the northern edge of the range for reptiles. They favour woodland with open areas for sleeping in the sun.

In England and Wales there are six species of reptile: Snakes – Adder, Grass snake and Smooth snake. Lizards – Common (Viviparous), Sand lizard, Slow Worm.

In Scotland only the adder, slow worm and common lizard come from there, but the sand lizard was introduced to the Inner Hebrides in 1971. Due to its cool climate, all Scottish reptiles keep their eggs inside their bodies and give birth to live young. Only the common or viviparous lizard is found in Northern Ireland.

Reptile bodies cannot correct their own body temperature. They get their warmth from the sun and the temperature around them. In the UK the winters are too cold for them to function and they undergo a type of hibernation called brumation.



Our News Our Views

c/o Hereford South Wye Team Office, 89
Ross Road, St. Martin's Church,
Hereford HR2 7RJ

Phone: 01432 352085 (Thursdays)
Email: ournewsourviews@hotmail.co.uk
Website: www.ournewsourviews.com

**Created and run by adults with a
learning disability.**

"Our News Our Views" is a
pioneering initiative run by adults
with a learning disability who have
pooled their personal budgets to set
up an accessible newsletter for the
Learning Disability Community of
Herefordshire. We are four years old
in June 2018!

**The deadline for articles and
adverts for the July edition is June
20th.**

(The editors reserve the right to
edit all copy.)

Thank You— We thank our advertisers for their support. **Advertise with us** — prices on website.

Disclaimer —We cannot accept any responsibility or liability for any opportunities or products described in the newsletter or offered by our advertisers that are printed in good faith.
We apologise for any mistakes we make.

**E F Bulmer
Benevolent Fund**

Thank you to our advertisers funders and sponsors!



*Making a real difference to the lives of
disabled people in Herefordshire*

Leisure, learning, social, voluntary and
work-based activities during the
daytime, evenings and weekends.



www.echoherefordshire.org.uk



Herefordshire Mencap, making a difference to
people's lives. Working with local people with a
learning disability, their families and anyone with
an interest in learning disability.

Informing, campaigning and plugging the gaps.

'Safe places'; 'changing places' toilets;
advocacy; 'Stay Up Late' gigs; 'Stop Gap Press'.

www.herefordshiremencap.co.uk find us on
Facebook and twitter @HerefordMencap.

HOUGHTON PROJECT

Rural Skills for All
Here you can:
Work with animals
Grow your own food
Make things out of wood in the workshop
Work in the woods

Come and see what we do

☎ 01568 797 900

tim@houghtonproject.co.uk
www.houghtonproject.co.uk



**A community project
offering Roller Skating
sessions for all abilities
and ages.**

We also offer a wide range of non-skating
activities during the week.

In the summer we are holding an activity
camp to keep the children entertained.

For all information contact:

matt@skatehereford.co.uk \ 07799662266
www.skatehereford.co.uk